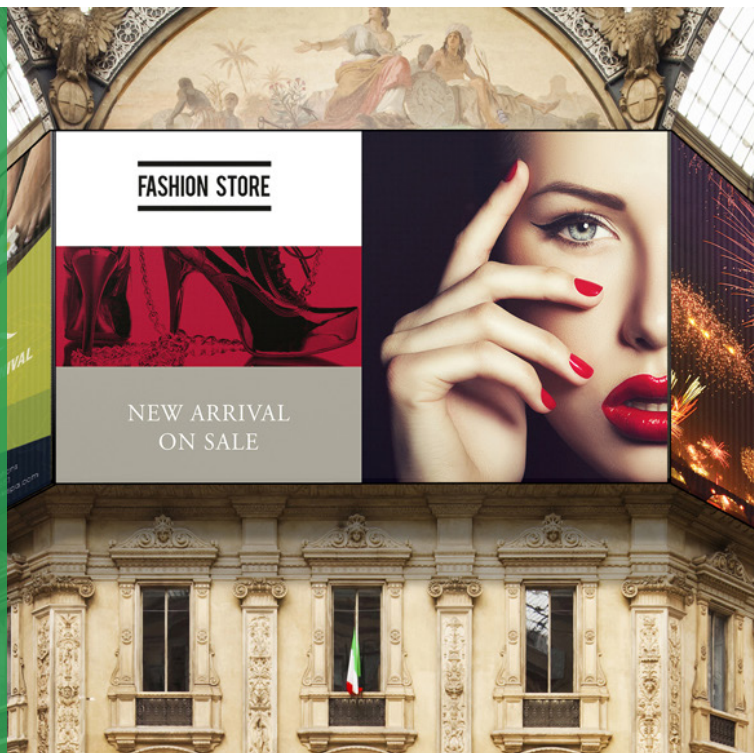


# MagicInfo Lite

MagicInfo is a smart, intuitive content creation and management solution that comes with every Samsung Display Solutions product. MagicInfo provides end-users with a suite of creative tools built to facilitate content creation and display management. Users enjoy a scale of opportunities, ranging from creating eye-catching digital signage to designing and managing a complex, interactive multimedia display system.



## Samsung MagicInfo Lite

MagicInfo Lite is fit for small and medium-sized organisations. MagicInfo Lite makes it possible to create playlist on the server, using content from pictures and video's to PowerPoint and Flash files. You can build a playlist real-time or using a pre-set schedule. Playing files can be easily done through the internal memory and using a connection between external USB devices and the built in portals of the Smart Signage screen.

### Features

- Suited for standalone devices and smaller networks
- Supported by all SSSP Samsung displays
- Adding content from intuitive plug and play method
- Playing video's (MP4, WMV), photo's (JPG), PowerPoint, Word and PDF files
- Adding and planning content from the MagicInfo Server



### MagicInfo Server

On the MagicInfo Server you can make and save your own playlist, locally or in the cloud. From this server you can schedule the playlist on the connected screens and set up each screen individually. This puts you in total control over the hardware, monitoring and previewing what runs on every screen.

### MagicInfo Client (native app)

The MagicInfo Client is installed on the Samsung Smart Signage screen. Your presentations are shown on-screen thanks to the connection between the server and the native app.